



---

UniversitätsKlinikum Heidelberg

# Allogene Stammzelltransplantation: Jahresbericht 2012

Sektion Stammzelltransplantation

Abteilung Innere Medizin V

Universitätsklinikum Heidelberg

Zahlen



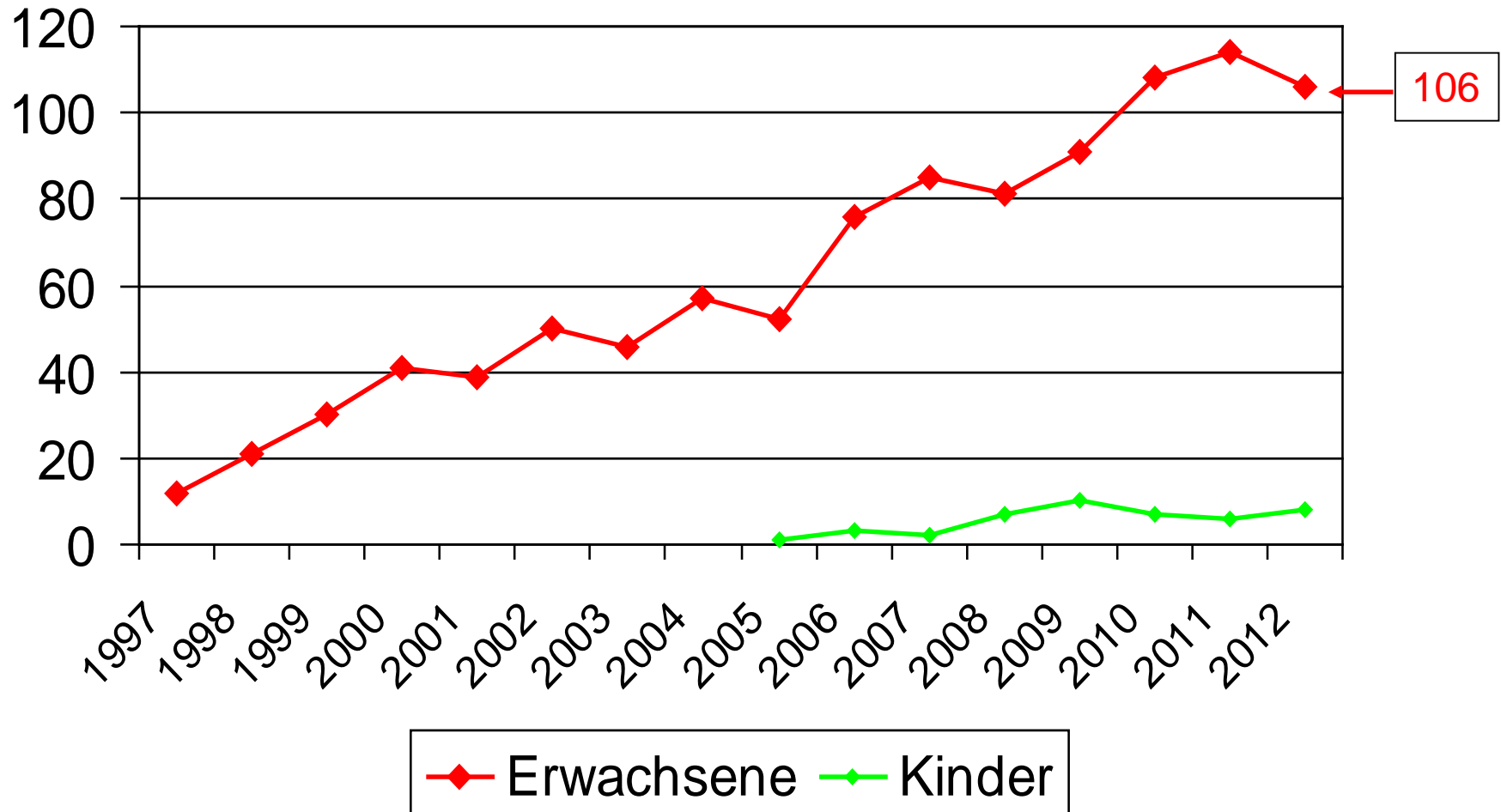
# SURVEY ON TRANSPLANT ACTIVITY 2012

## HSCT (nur Erwachsene)

NUMBER OF PATIENTS RECEIVING FIRST TRANSPLANTS ONLY IN 2012																
Allogeneic									Autologous			Total				
HLA - id sibling			HLA non-id relative			Twin			Unrelated			Allo	Auto	Total		
BM	PBSC	Cord	BM	PBSC	Cord	BM	PBSC	BM	PBSC	Cord	BM				PBSC	Cord
4	23		2				1	1	75			206		106	206	312

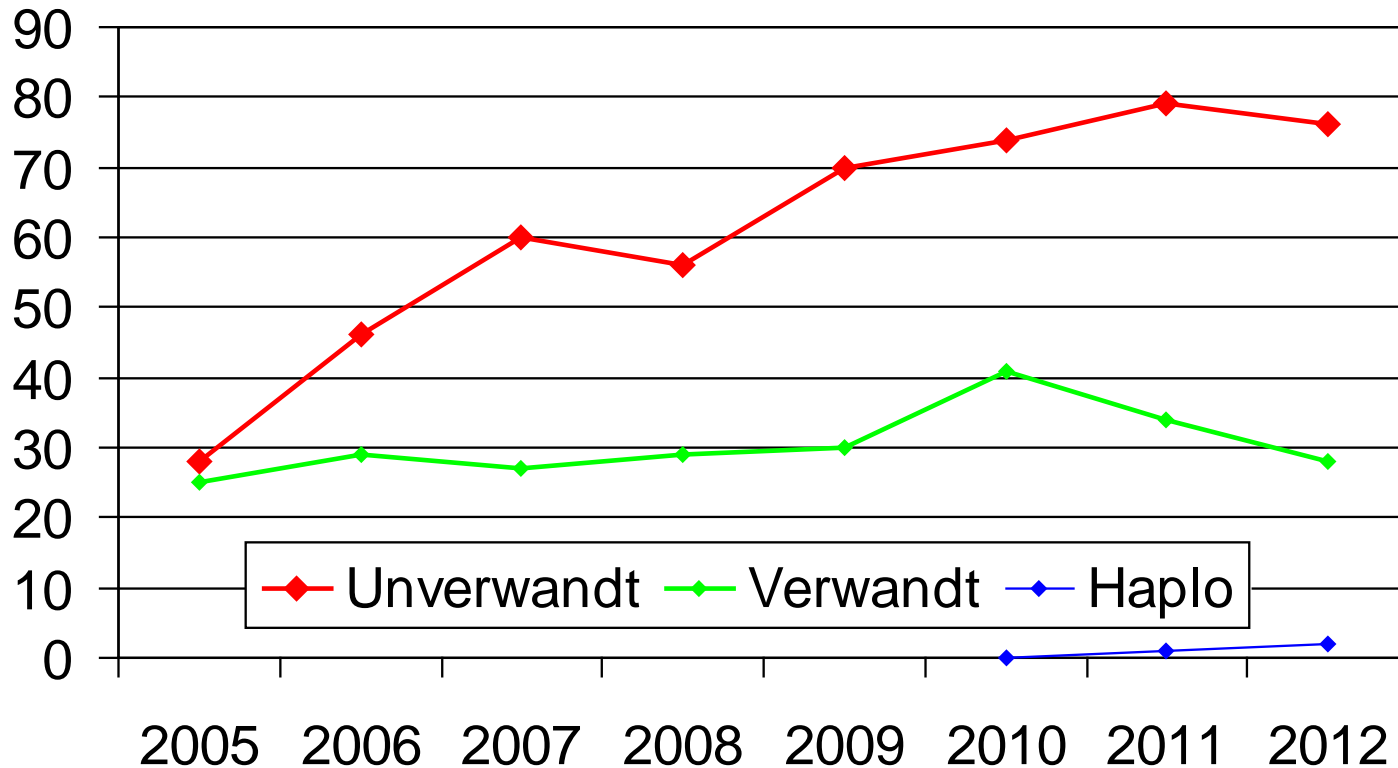


# HD: allogene Transplantationszahlen



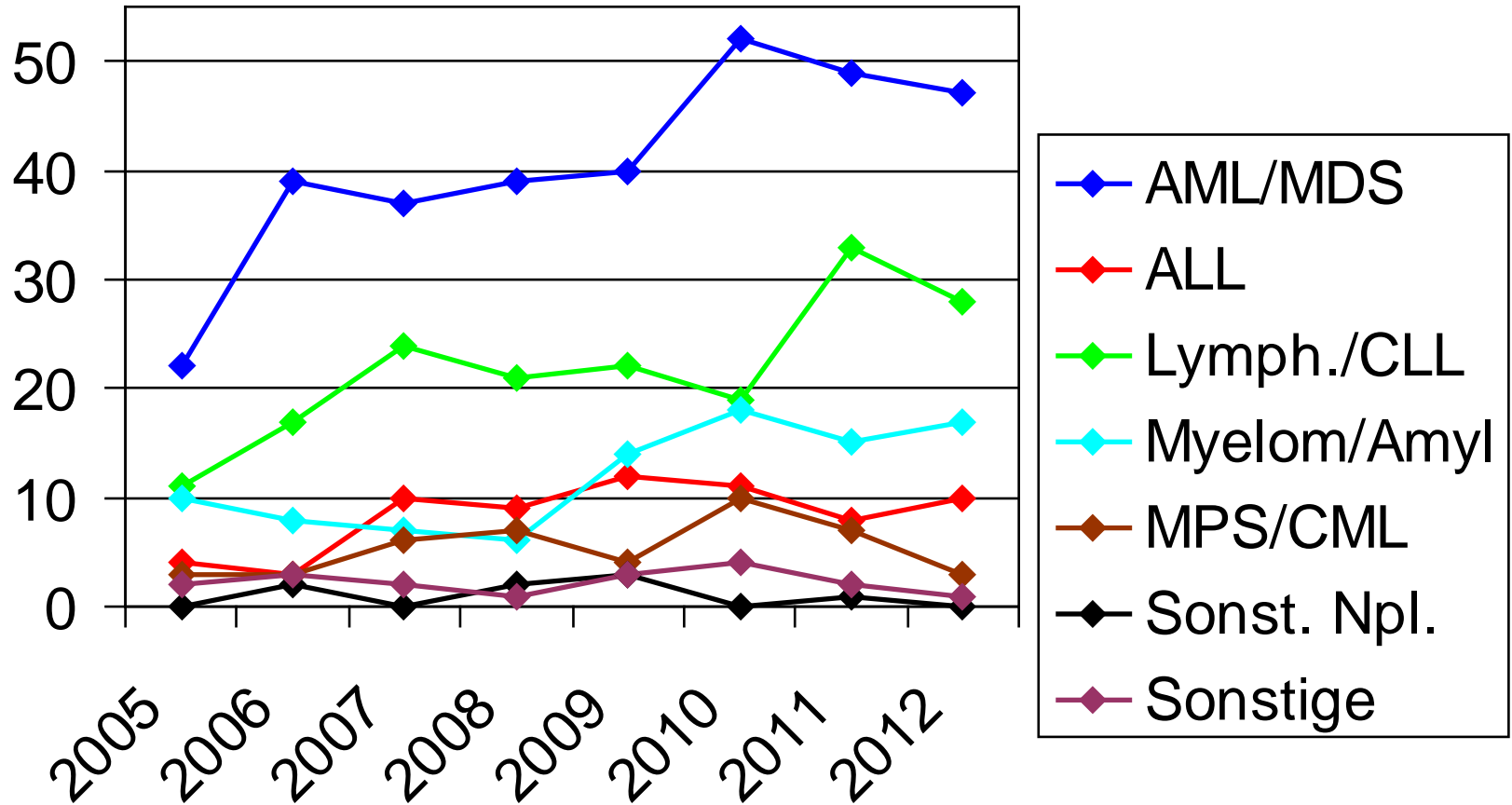


# HD: Spender 2005-2012





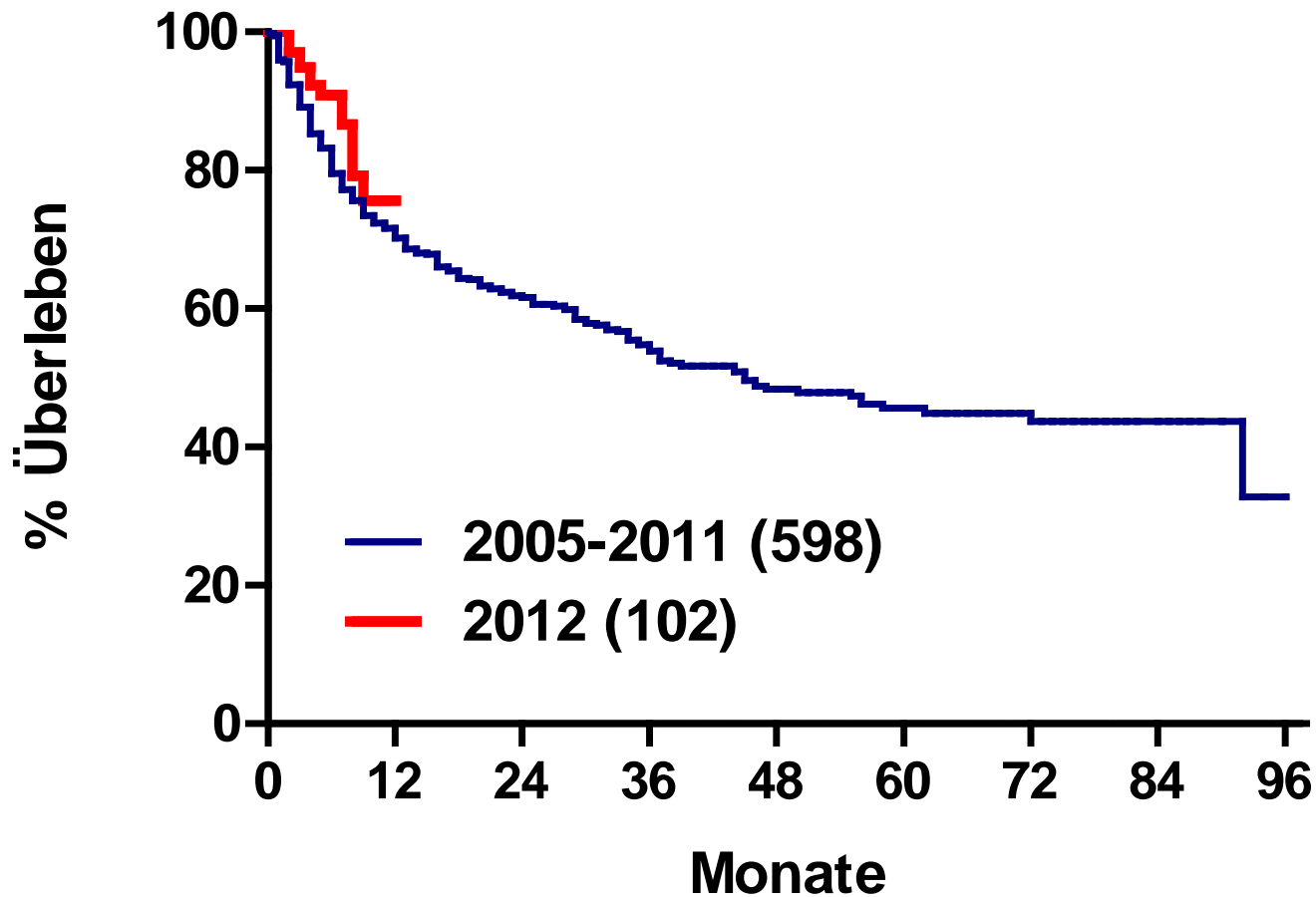
# HD: Indikationen 2005-2012



# Ergebnisse



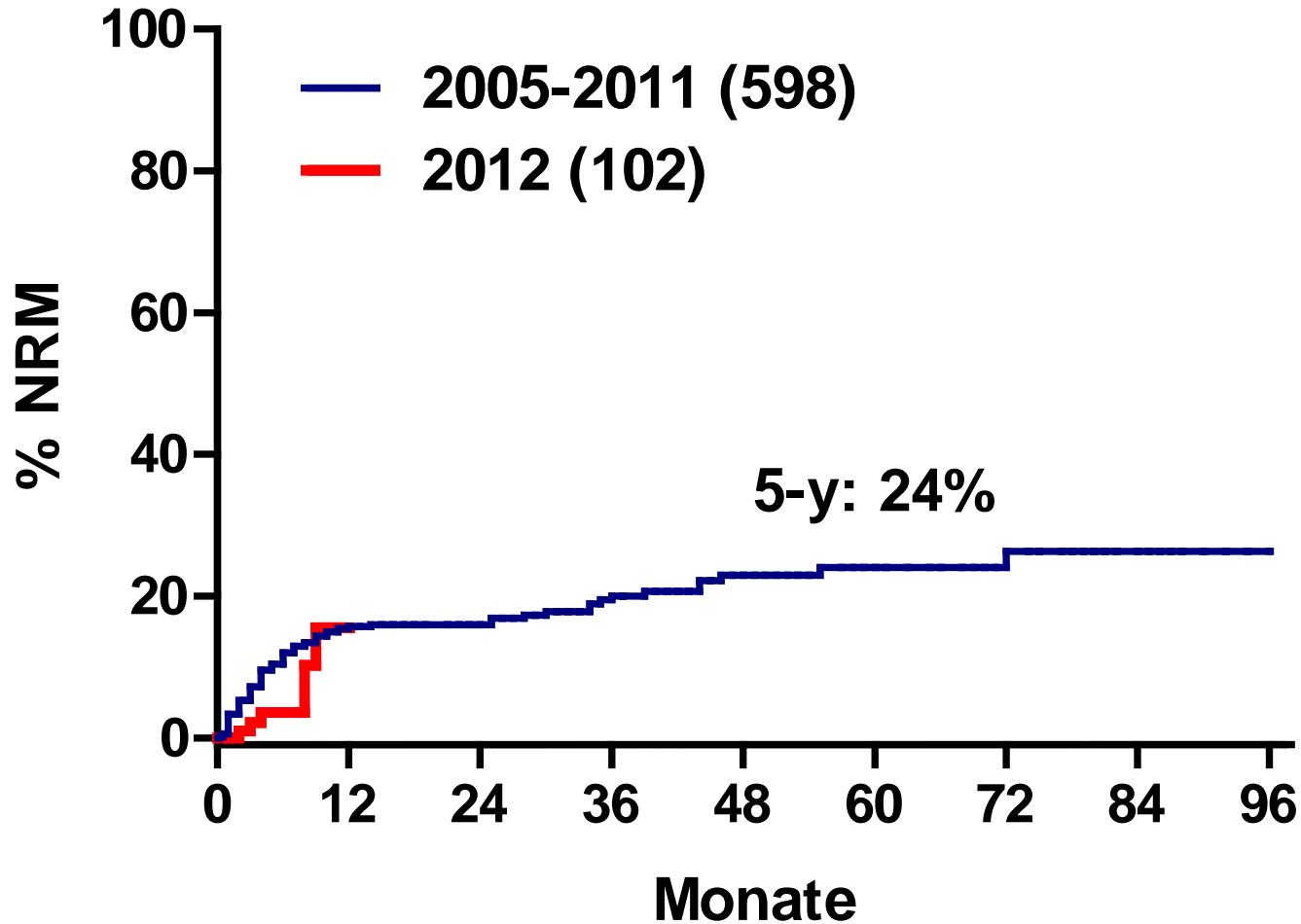
# HD: Gesamtüberleben (Erwachsene)





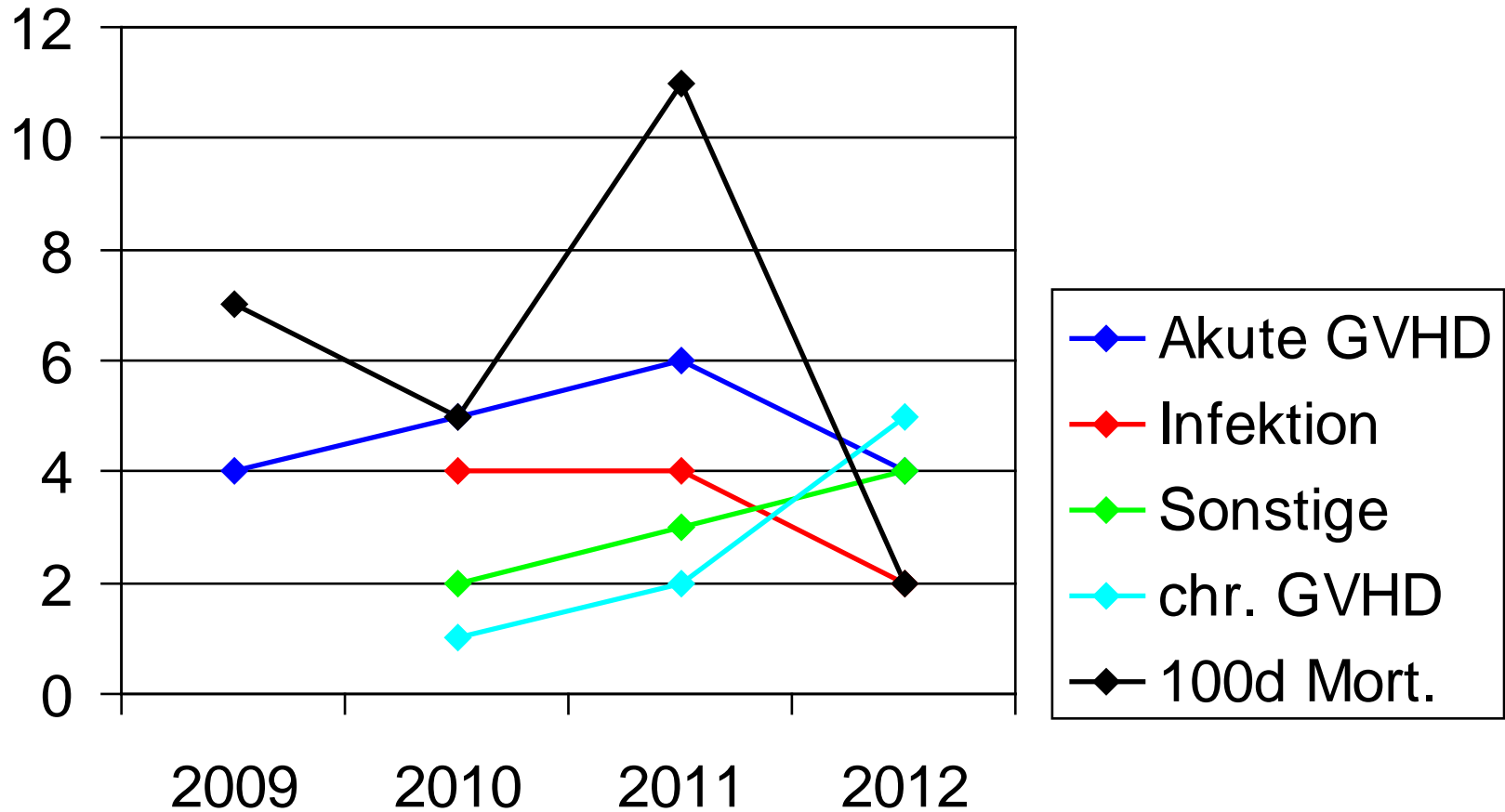


# Non-Relapse Mortality (Erwachsene)





# HD: Ursachen NRM 2009-2012

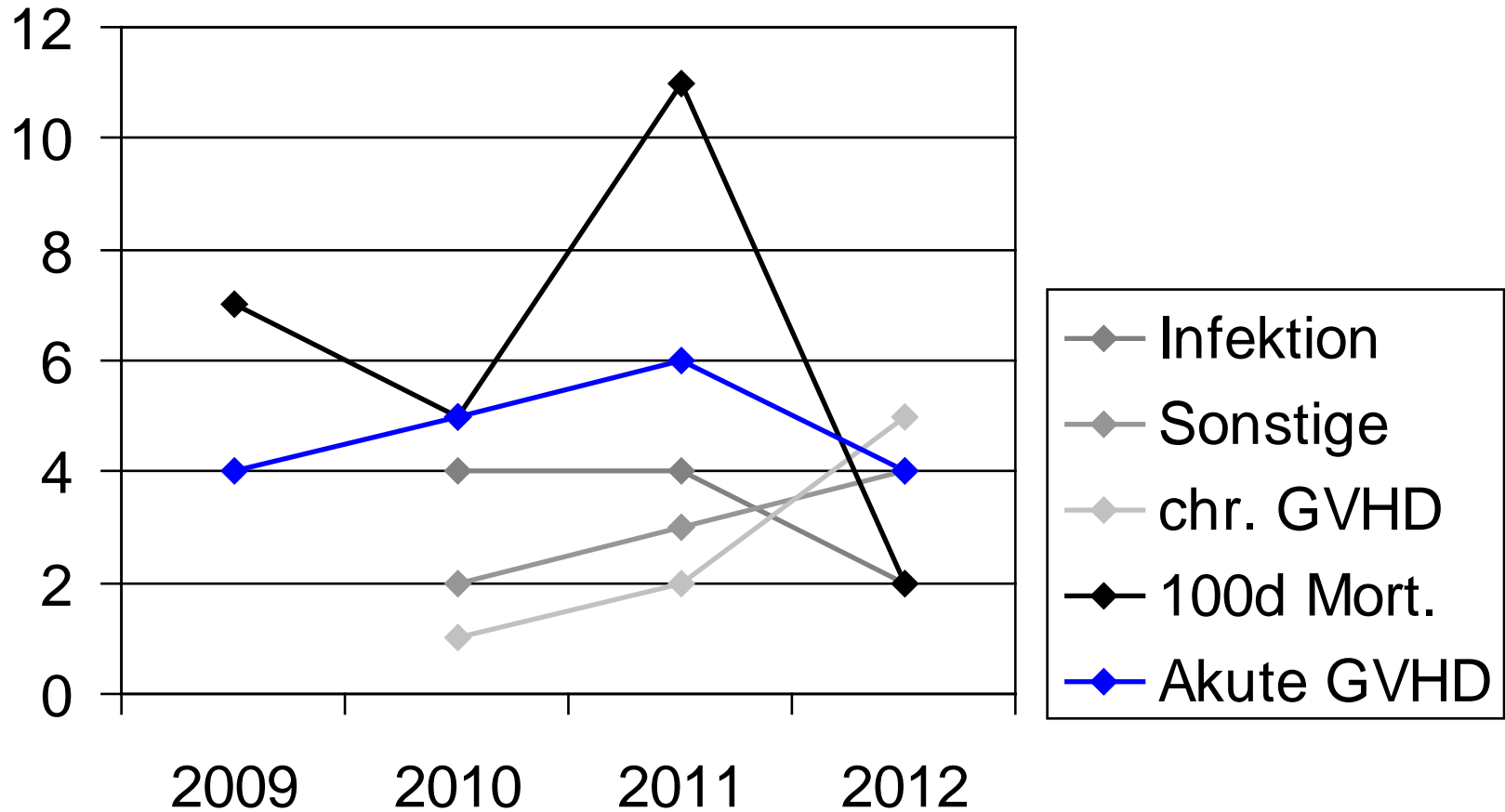


Forschung

**GVHD**



# HD: Ursachen NRM 2009-2012



# blood

2011 118: 1685-1692  
Prepublished online June 2, 2011;  
doi:10.1182/blood-2011-02-334821

## **Steroid-refractory GVHD: T-cell attack within a vulnerable endothelial system**

Thomas Luft, Sascha Dietrich, Christine Falk, Michael Conzelmann, Michael Hess, Axel Benner, Frank Neumann, Berend Isermann, Ute Hegenbart, Anthony D. Ho and Peter Dreger

## **Loss of endothelial thrombomodulin predicts response to steroid therapy and survival in acute intestinal graft-versus-host disease**

by Mindaugas Andrusis, Sascha Dietrich, Thomas Longerich, Ronald Koschny, Maria Burian, Annette Schmitt-Graeff, Peter Schirmacher, Anthony D. Ho, Peter Dreger, and Thomas Luft

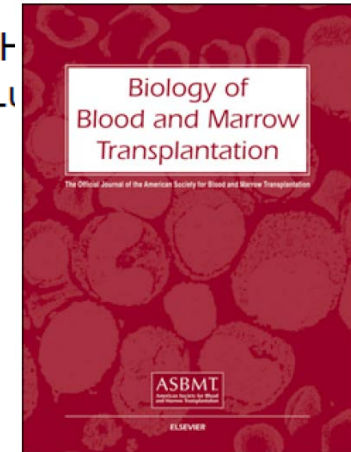
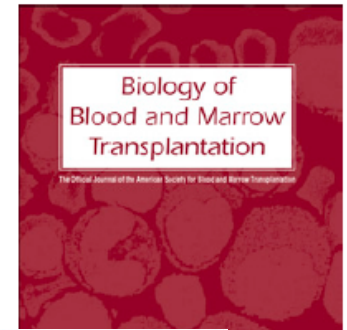
*Haematologica 2012 [Epub ahead of print]*

→ **Endotheliale Vulnerabilität / Integrität sind assoziiert mit Steroid-Refraktärität**

# Accepted Manuscript

Endothelial vulnerability and endothelial damage associate with GVHD risk and response to steroid treatment

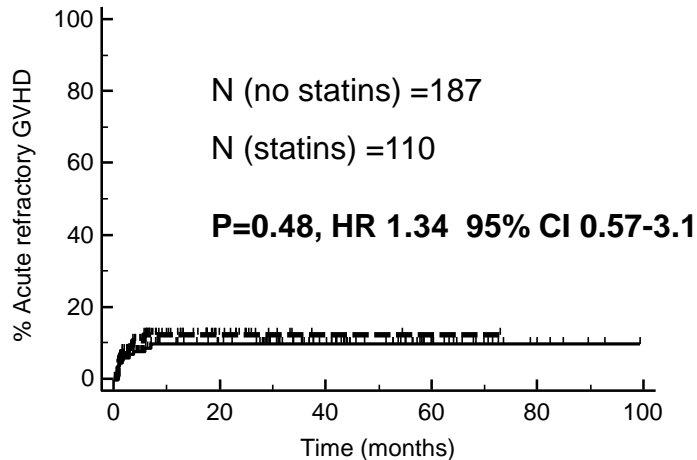
Sascha Dietrich, Christine S. Falk, Axel Benner, Suzan Karamustafa, Esther H. Mindaugas Andrusis, Ute Hegenbart, Anthony D. Ho, Peter Dreger, Thomas L.



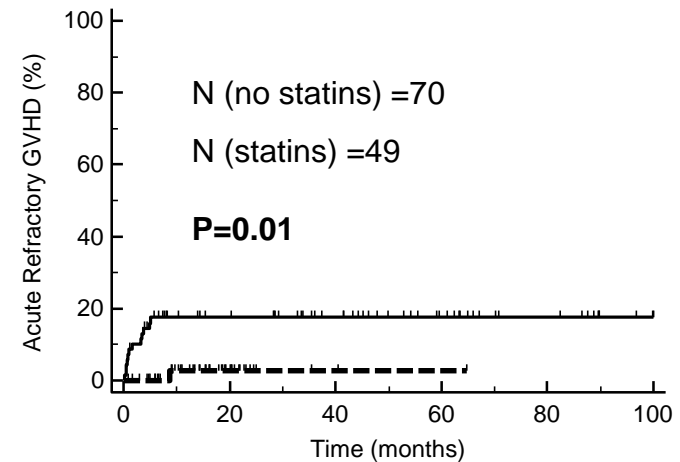
→ Endotheliale Vulnerabilität / Integrität sind assoziiert mit Steroid-Refraktärität, aber nicht mit GVHD-Risiko per se!

# Endotheliale Vulnerabilität: Statine und Risiko steroid-refraktärer GVHD

## Endothelialer Marker niedrig



## Endothelialer Marker hoch







# Ursachen NRM im Einzelnen

(der in 2012 Transplantierten)

- Tod in primärer Aplasie: 0
- Akute GVHD: 3  
(Bolz d +63, Pörtner d +80, Röhl d +259)
- Infektion: 0
- Unklar: 1  
(Tetzlaff d +230)

**PTCL**

# **ALK- peripheral T cell lymphoma (PTCL): Feasibility of first-line autoSCT and efficacy of salvage strategies after relapse: A single centre intent-to-treat analysis.**

*Sarah Rohlving et al*

## **AIM:**

- to investigate the feasibility and efficacy of autoSCT in PTCL in the upfront setting by intent-to-treat,
- to study salvage strategies in case of relapse.

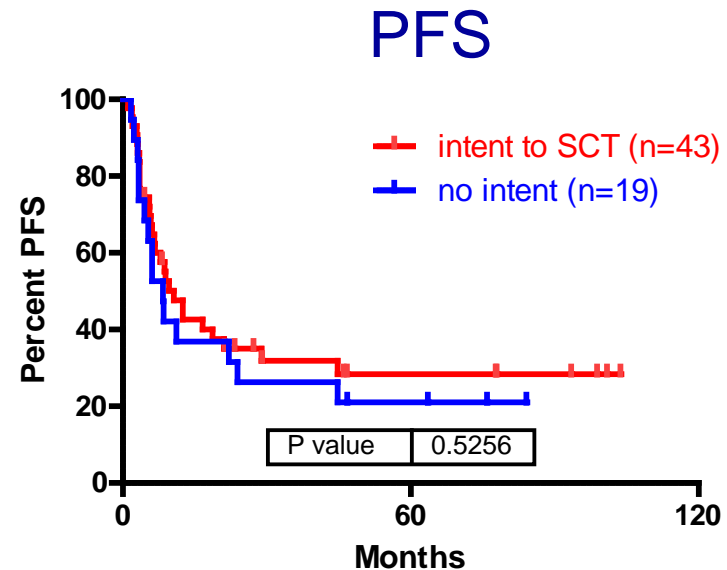
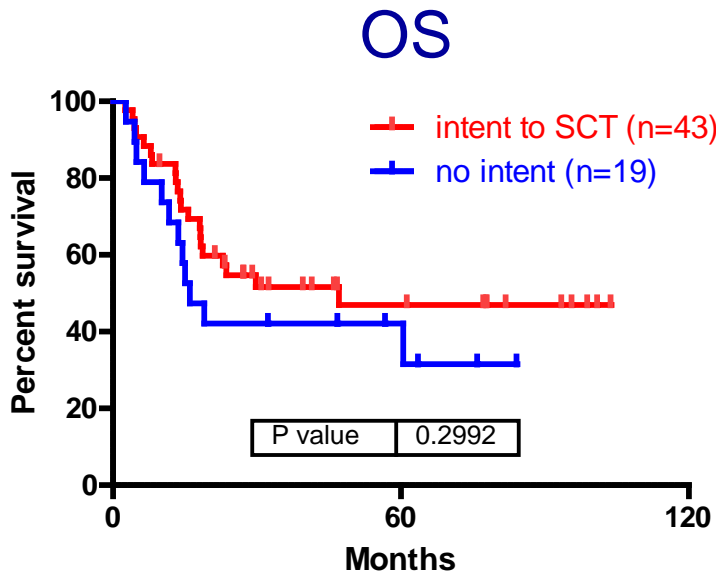
## **ELIGIBILITY:**

All patients with PTCL aged 18-70 years, diagnosed at our institution from 2002 through 2011.

# PTCL: Feasibility of first-line autoSCT and efficacy of salvage strategies after relapse: A single centre intent-to-treat analysis. *Sarah Rohlfing et al*

## RESULTS I:

Efficacy of autoSCT in PTCL in the upfront setting by **intent-to-treat**

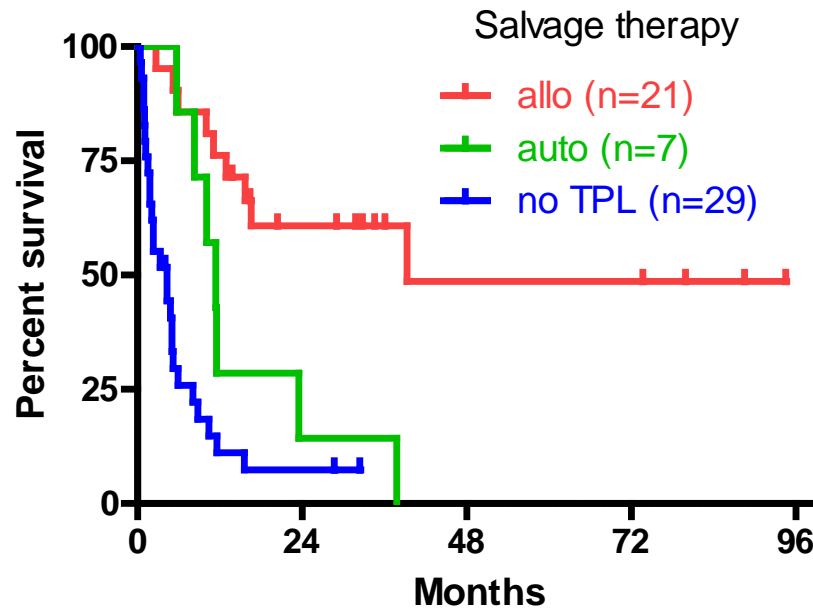


# PTCL: Feasibility of first-line autoSCT and efficacy of salvage strategies after relapse: A single centre intent-to-treat analysis. *Sarah Rohlfing et al*

## RESULTS II:

Efficacy of salvage strategies in case of relapse (which occurred in 57 of 77 patients (74%))

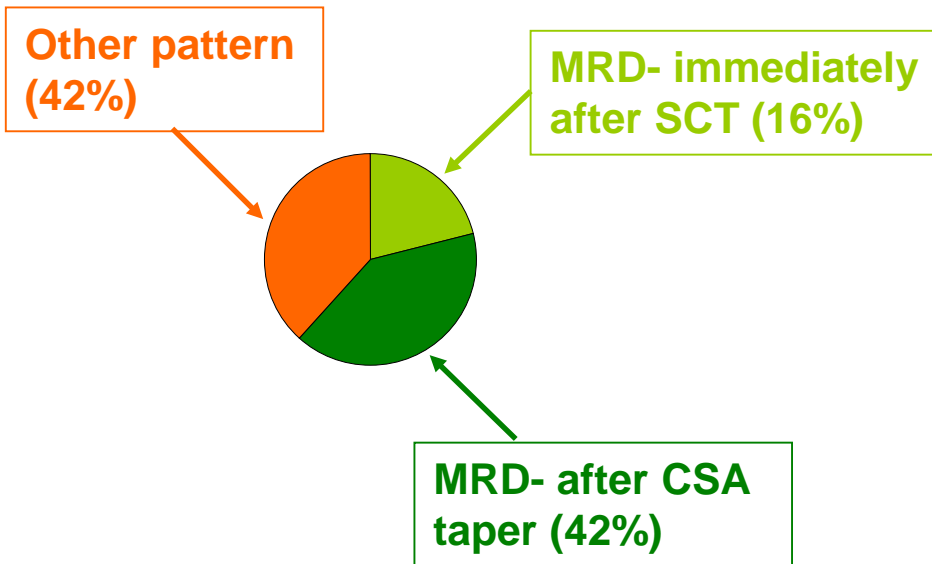
OS



CLL

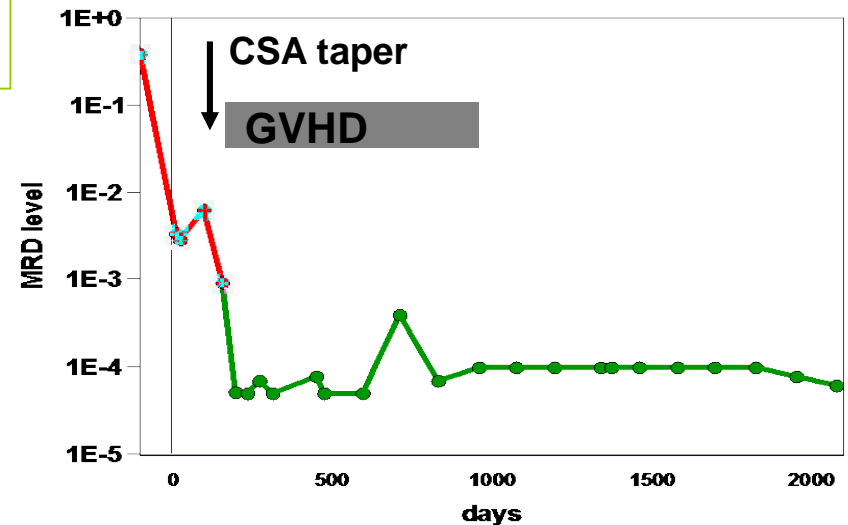
# alloSCT for CLL: MRD response patterns

DEUTSCHE STUDIENGRUPPE  CLL3X (n=52)



Dreger et al, Blood 116:2438 (2010)

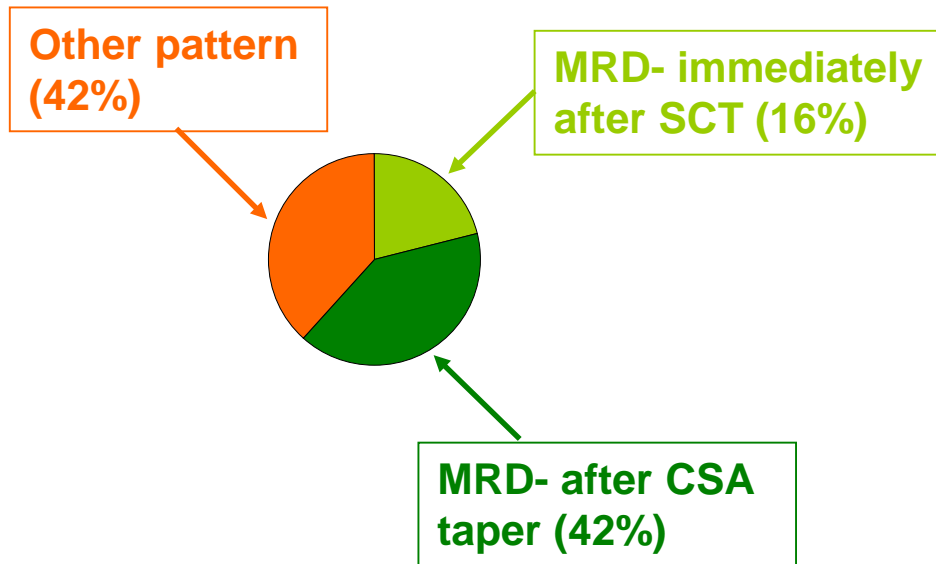
## A: MRD- after CSA taper





Ritgen et al, Leukemia 22:1377 (2008)

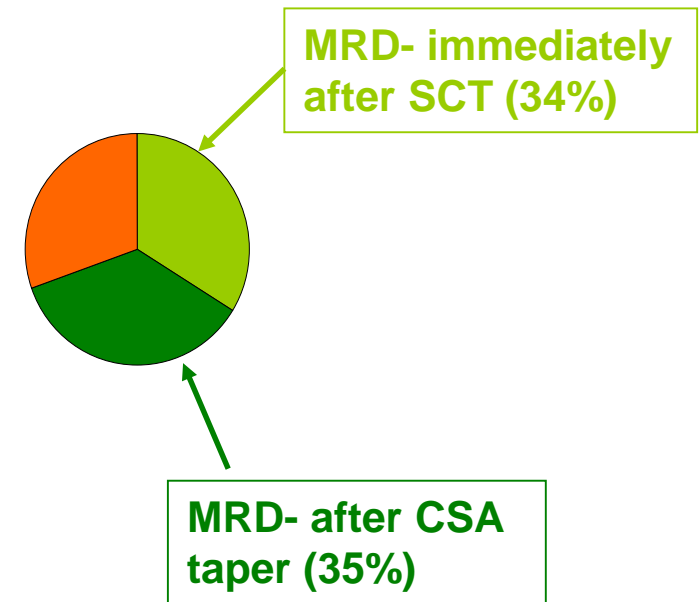
# alloSCT for CLL: MRD response patterns

DEUTSCHE STUDIENGRUPPE  CLL3X (n=52)



Dreger et al, Blood 116:2438 (2010)

  Heidelberg 2005-2012 (n=62)



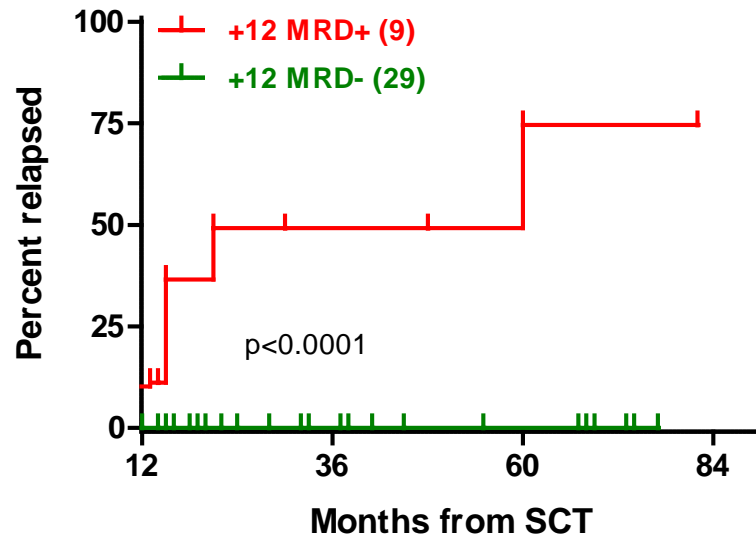
Hahn et al, EBMT 2013



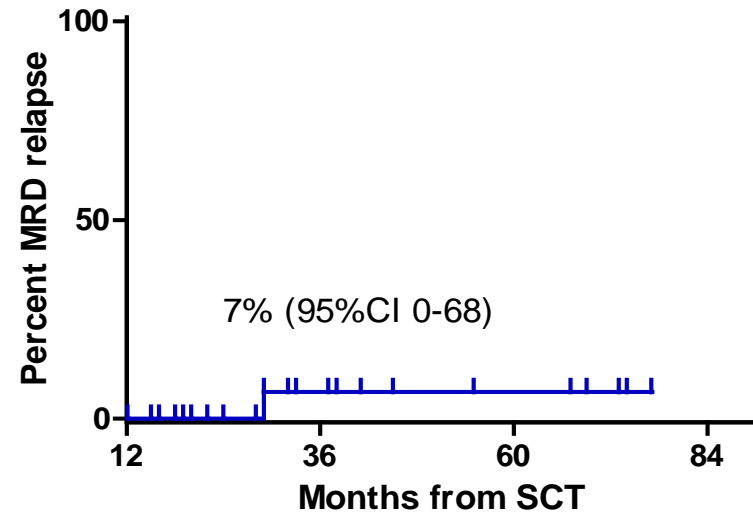
# Heidelberg CLL 2005-2012: Relapse by MRD negativity at +12mo

(of 38 patients with MRD monitoring and event-free at mo +12)

## Clinical Relapse



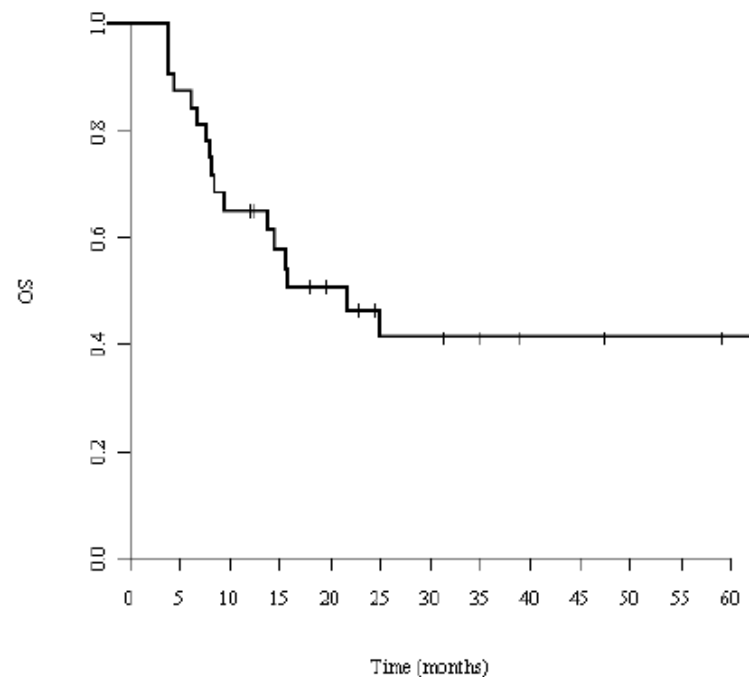
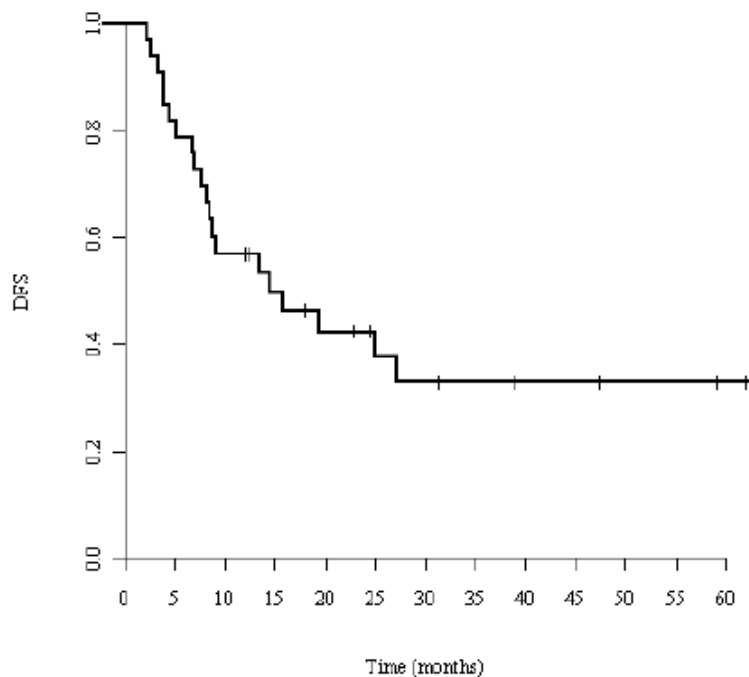
## MRD relapse of patients MRD- at 12months



**BPDC**

## Stem cell transplantation can provide durable disease control in Blastic plasmacytoid dendritic cell neoplasm (BPDCN)

Damien Roos-Weil, Sascha Dietrich, Ariane Boumendil, Emmanuelle Polge, Dominique Bron, Enric Carreras, Arturo Iriondo Atienza, William Arcese, Dietrich W. Beelen, Jan J. Cornelissen, Nicolaus Kröger, Giuseppe Milone, Giuseppe Rossi, Fabrice Jardin, Christina Peters, Vanderson Rocha, Anna Sureda, Mohamad Mohty and Peter Dreger



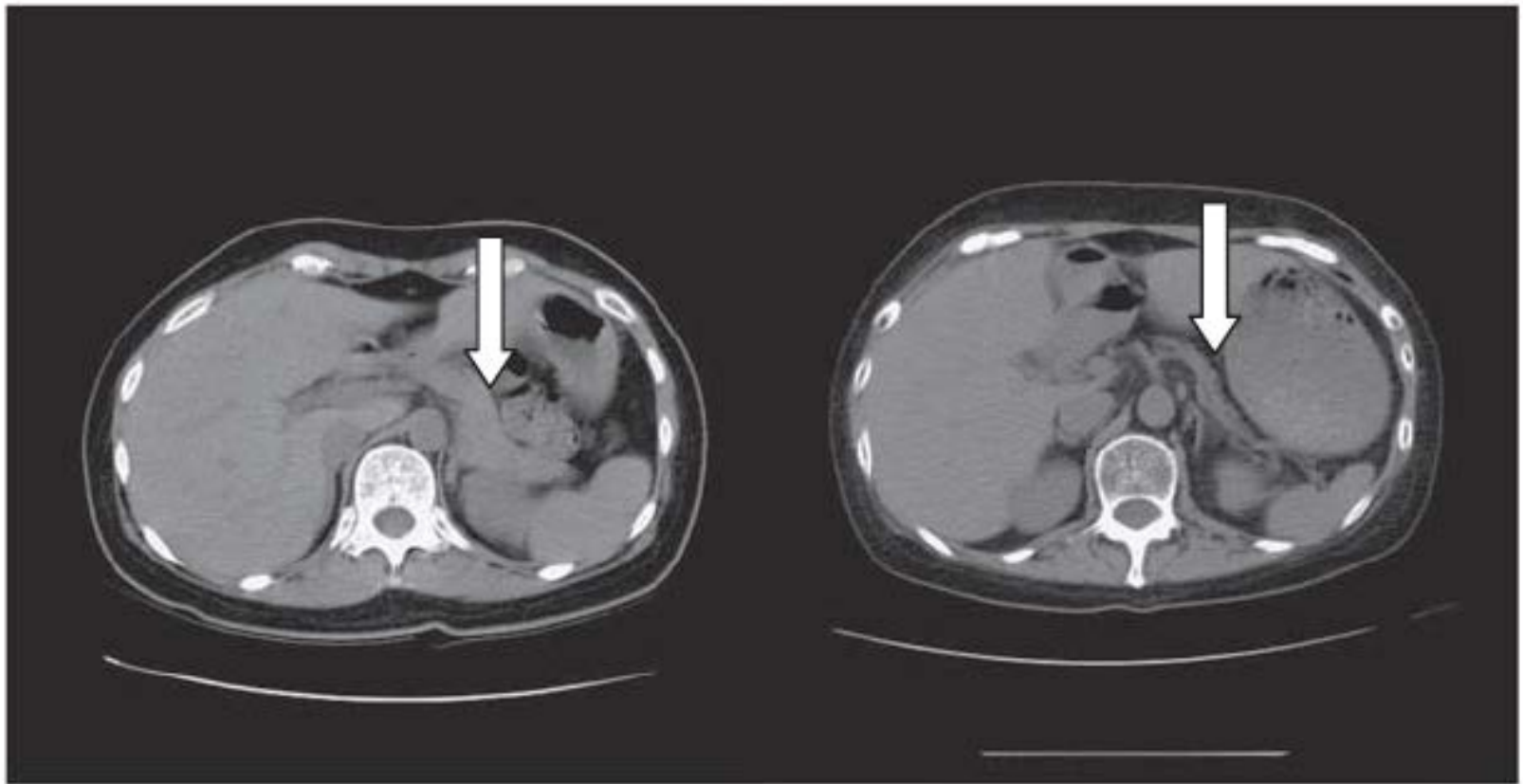
**Visionen**

# Pancreas atrophy after alloSCT

(observed in 5 of 30 patients studied, Nakasone et al BMT 2010)

Pre-transplant

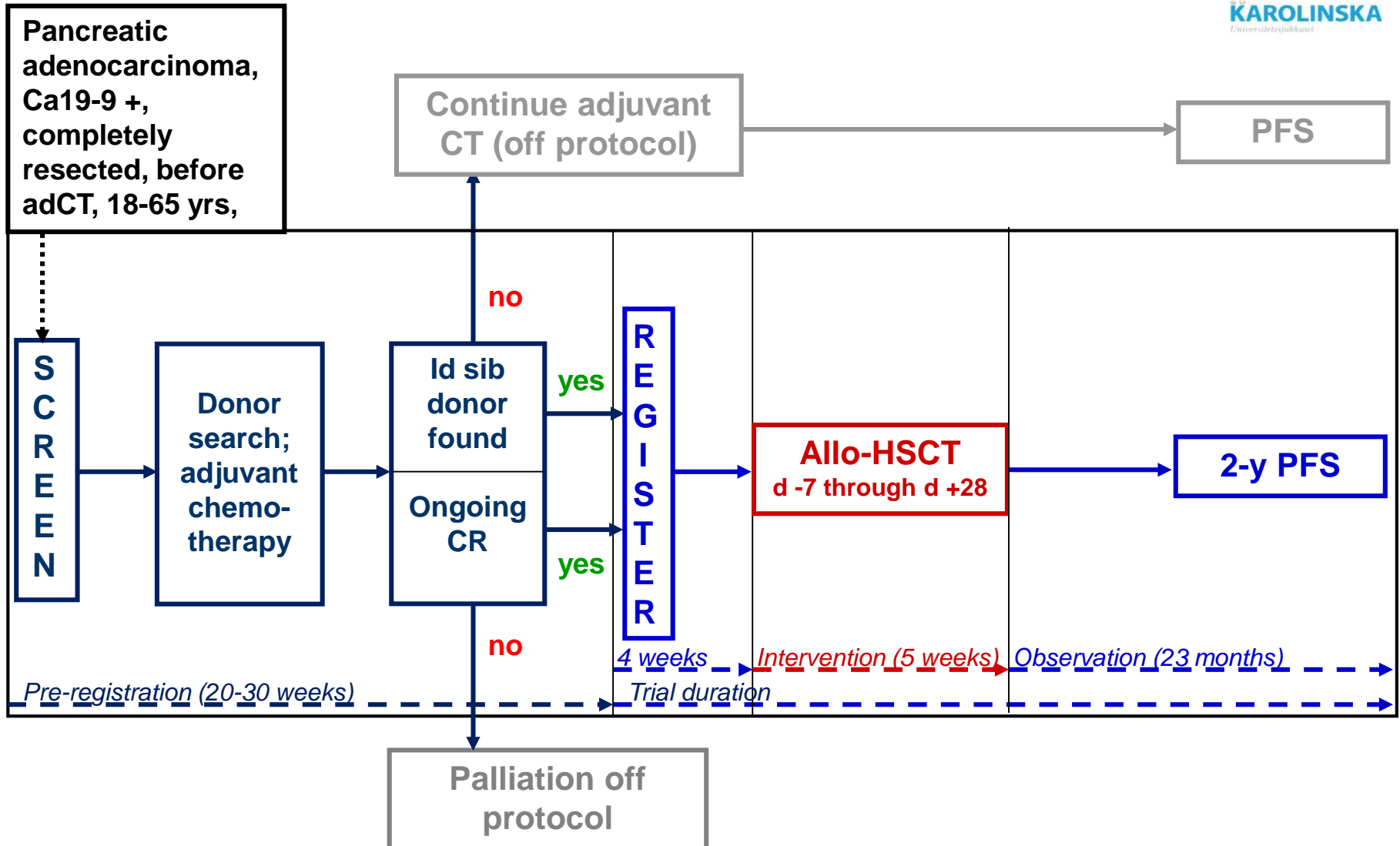
Post-transplant



**Graft-versus-tumor  
activity in pancreatic  
carcinoma?**







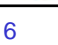



# STEM PACE Trial - Flow sheet



Impact



# Gewichteter Impact allo 2012

#	Artikel	IF 2011	Gewicht	Total
1	 <b>Dietrich S</b> , Roos-Weil D, Boumendil A ... <b>Dreger P</b> . Stem cell transplantation can provide durable disease control in Blastic plasmacytoid dendritic cell neoplasm. <i>Blood</i> 121:440-446 (2013)	9.898	6	<b>59.388</b>
2	 <b>Dietrich S</b> , Falk CS, Benner A ... <b>Luft T</b> . Endothelial vulnerability and endothelial damage associate with GVHD risk and response to steroid treatment. <i>Biol Blood Marrow Transplant</i> 9:22-27 (2013)	3.873	6	<b>23.238</b>
3	 <b>Dreger P</b> , Döhner H, <b>McClanahan F</b> et al. Early autologous stem cell transplantation for chronic lymphocytic leukemia: long-term follow-up of the GCLLSG CLL3 trial. <i>Blood</i> 119:4851-4859 (2012)	9.898	6	<b>59.388</b>
4	 Andrulis M, <b>Dietrich S</b> , Longerich T... <b>Luft T</b> , Loss of endothelial thrombomodulin predicts response to steroid therapy and survival in acute intestinal graft-versus-host disease. <i>Haematologica</i> 97:1674-1677 (2012)	6.532	4	<b>26.128</b>
5	 Sureda A, Pereira MI, <b>Dreger P</b> . The role of hematopoietic stem cell transplantation in the treatment of relapsed/refractory Hodgkin's lymphoma. <i>Curr Opin Oncol</i> 24:727-732 (2012)	4.101	4	<b>16.404</b>
6	 Cwynarski K, van Biezen A, de Wreede L... <b>Dreger P</b> . Autologous and Allogeneic Stem-Cell Transplantation for Transformed Chronic Lymphocytic Leukemia (Richter's Syndrome): A Retrospective Analysis From the European Group for Blood and Marrow Transplantation. <i>J Clin Oncol</i> 30:2211-2217(2012)	18.970	4	<b>75.880</b>
7	 Wiktor-Jedrzejczak W, Dearden C, ... <b>Dreger P</b> . Hematopoietic stem cell transplantation in T-prolymphocytic leukemia: a retrospective study from the European Group for Blood and Marrow Transplantation and the Royal Marsden Consortium. <i>Leukemia</i> 26:972-976 (2012).	9.561	4	<b>38.264</b>
8	Pfeifer H, Wassmann B, Bethge W... <b>Dengler J</b> , ... <b>Dreger P</b> et al. Randomized comparison of prophylactic and minimal residual disease-triggered imatinib after allogeneic stem cell transplantation for BCR-ABL1 positive acute lymphoblastic leukemia. <i>Leukemia</i> 2012	9.561	1	<b>9.561</b>
9	Ghielmini M, Vitolo U, Kimby E ... <b>Dreger P</b> et al. ESMO Guidelines consensus conference on malignant lymphoma 2011 Part 1: diffuse large B-cell lymphoma, follicular lymphoma and chronic lymphocytic leukemia. <i>Ann Oncol</i> 2012	6.425	1	<b>6.425</b>
10	Wolschke C, Stubig T, <b>Hegenbart U</b> et al. Post-allograft lenalidomide induces strong NK cell-mediated anti-myeloma activity and risk for T cell-mediated GvHD. Results from a phase I/II dose-finding study. <i>Exp Hematol</i> 41:134-142 (2013)	2.905	1	<b>2.905</b>
11	Bornhäuser M, Kienast J, Trensche R ... <b>Hegenbart U</b> , <b>Dreger P</b> et al. Reduced-intensity conditioning versus standard conditioning before allogeneic haemopoietic cell transplantation in patients with acute myeloid leukaemia in first complete remission: a prospective, open-label randomised phase 3 trial. <i>Lancet Oncol</i> 2012;13:1035-1044	22.589	1	<b>22.589</b>
12	Metzelder S, Schroeder T, Finck A ... <b>Dreger P</b> et al. High activity of sorafenib in FLT3-ITD-positive acute myeloid leukemia synergizes with allo-immune effects to induce sustained responses. <i>Leukemia</i> 2012;26:2353-2359	9.561	1	<b>9.561</b>
13	 Passweg JR, Baldomero H, Gratwohl A ... <b>Dreger P</b> et al. The EBMT activity survey: 1990-2010. <i>Bone Marrow Transplant</i> 2012;47:906-923	3.746	1	<b>3.746</b>
	<b>Total</b>			<b>353.477</b>

# Oral presentations at major meetings 2012

Topic	Oral presentations in 2011	Presenters	Meetings
CLL	Donor vs no-donor HD	I. Herth	EBMT, DGHO
CLL	Impact of gene mutations on allo-SCT (CLL3X)	P. Dreger	ASH
BPDC	alloSCT EBMT	S. Dietrich, P. Dreger	EBMT
GVHD	Endothelial markers and steroid refractoriness	S. Dietrich, T. Luft	DGHO
Lymphoma	MCL relapse EBMT	S. Dietrich	ASH
Lymphoma	DLCL in R era EBMT	S. Robinson, P. Dreger	ASH
Lymphoma	TBI for 1st ASCT in FL (EBMT)	I. El-Najjar, P. Dreger	EBMT
Lymphoma	EBMT FL Transplant Consensus	S. Montoto, P. Dreger	EHA
Lymphoma	Thiotepa auto EBMT	A. Boumendil, P. Dreger	EHA



# “Allo” sind

## „von Dusch“

ML Knee

R Gruß

R Adam

...und das Team!

## Station

C Harter

S Ayyaz

C Brandt

M Conzelmann

C Heilig

K Horstmann

S Jung

S Kierschke

J Pfeiffenberger

K Schmidt

A Martin

## Koordination

P Stadtherr

I Opitz

A Herrmann

## Psychologie

D Tönnessen

## Ambulanz

T Luft

S Schönland

T Bochtler

S Dietrich

S Jung

S Rohlfing

M Schubert

P Wuchter

K Zerfass

S Zink

## Case Manager

A Bondong

L Keilbach

## Labor

T Luft

S Dietrich

M Hess

R Schulz & Team

## HLA

H Tran

K Nerbel

G Opelz & Team

## QM & JACIE

M Geiss

M Schubert

U Klein

## Sozialdienst

A Bergner

G Daiß

Sontowski

## Studienzentrale

AM Geueke

J Klemmer

F Michel

& Team

## Anleitung

U Hegenbart

P Dreger

## Early Bird Team

G Egerer

AD Ho

...alle Mitarbeiter der MedV !