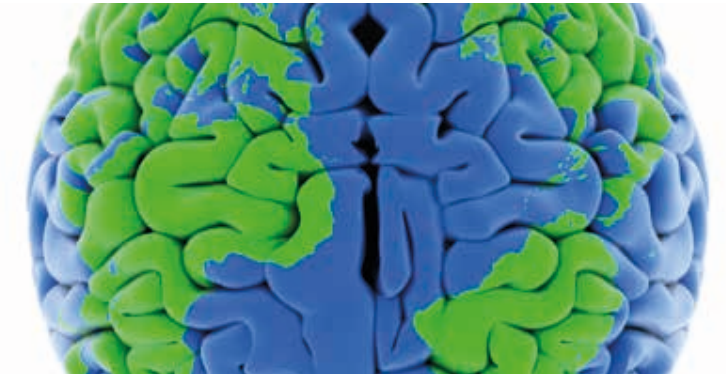


## SCHEDULE 2019

**heiGRADE**  
POSTGRADUATE STUDIES



**UNIVERSITÄT  
HEIDELBERG**  
ZUKUNFT  
SEIT 1386



Short Courses in International Health  
May 27 – 31, 2019

**GLOBAL  
MENTAL HEALTH**

### FACTS

#### Duration and Accreditation

1 weeks (60 hrs SIT), 2 ECTS (tropEd)

#### Course Fee

General Admission **€ 750**  
tropEd **€ 500**

Included in the course fee is a non-refundable registration fee of € 200.

#### Registration

All applications should be submitted online. A limited number of places are available in each short course. Places are allocated on a first come first served basis.  
■ [www.ukl-hd.de/ph/shortcourses](http://www.ukl-hd.de/ph/shortcourses)

#### Short Courses/TropEd Coordinator

Nandita Rothermund-Bucher, M.A.  
Heidelberg Institute of Global Health  
Heidelberg University  
Tel.: +49 (0) 6221-564648  
Fax: +49 (0) 6221-564918  
[short.courses@urz.uni-heidelberg.de](mailto:short.courses@urz.uni-heidelberg.de)

#### Course Coordinator

Dr. Wolfgang Krahl MD, MA  
Senior Consultant Psychiatrist  
Chairman of i.nez  
(International Network for  
Cooperation in Mental Health )

#### Teaching Coordinator

Dr. Pauline Grys  
Heidelberg Institute of Global Health  
Heidelberg University  
[grys@uni-heidelberg.de](mailto:grys@uni-heidelberg.de)

**November 1, 2018 – April 30, 2019**  
E-Learning Course: Quality Improvement

**January 7 – 18, 2019**  
Disease control: Strategies and Policies

**January 21 – February 1, 2019**  
Public health anthropology

**February 4 – 15, 2019**  
Global Challenges in Reprod. Health

**February 18 – March 1, 2019**  
Improving quality of health care services in  
resource limited settings

**March 4 – 15, 2019**  
Consultancy Skills in International  
Cooperation in Health

**March 18 – 29, 2019**  
Leadership and Change Management in  
International Health

**April 1 – 12, 2019**  
Financing Health Care

**April 29 – May 10, 2019**  
Public Health and Disasters

**May 13 – 17, 2019**  
Proposal Writing as a Consultancy Skill

**May 20 – 24, 2019**  
Decision-making in Public Health

**May 27 – 31, 2019**  
Global Mental Health

**June 3 – 7, 2019**  
Health Systems Strengthening

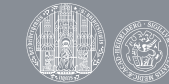
**June 10 – 21, 2019**  
Quality Management in International Health

**June 24 – July 5, 2019**  
Consultancy Skills in International  
Cooperation in Health

**July 8 – 19, 2019**  
Mixed Methods

**July 22 – 26, 2019**  
Applying the Rights Based Approach in  
Achieving Health Related SDGs

© Universität Heidelberg - Kul - Foto: iStock, Henrik5000 - Satz und Druck: Print + Medien ZNF



UNIVERSITÄTS  
KLINIKUM  
HEIDELBERG

tropEd

# GLOBAL MENTAL HEALTH

## Content Overview

Mental disorders in low- and middle-income countries (LMICs) do not attract local, national or global health policy attention, although accounting for a considerable burden of disease. The majority of people with mental disorders do not receive evidence-based care, leading to chronicity, suffering and increased costs of care.

Strengthening care and services for people with mental disorders is a priority and needs additional investment in human resources and piggy backing on existing public health programmes.

This course explores the different concepts of mental health, in their respective cultural settings, and addresses programme planning for this much neglected field of health affecting very marginalised populations.

## Main Topics

- Mental health concepts in LMCs
- Programme planning
- Strengthening care and health services

## Target Group

Public health professionals, social scientists, paramedical staff, project planners and coordinators, medical doctors, tropEd course participants.

## Prerequisites

This course is held in English. The course is held in English. Fluency in English (Reading, Speaking and Writing) required.

## Learning Objectives

This course aims to provide students with the necessary tools to develop and to successfully implement evidence-informed decisions in GMH  
At the end of the course, students will be able:

- critically analyse the epidemiology and social determinants of mental disorders globally and identify strategies to address the burden of disease.
- to critically appraise examples of research and treatment/intervention models at regional level given different levels of resources

## Teaching and Assessment

The course aims to initiate an active participatory learning process. It uses a mixture of interactive lectures, individual assignments, case studies, group work and presentations.

It consists of preparatory reading (16 hrs) Interactive lectures (16 hrs); tutored individual practical exercises (4 hrs); group work based on case studies and presentations (12 hrs); and plenary discussion (4 hrs).

Participants' learning will be assessed on:

- Individual written assignment (essay): critical synthesis of retrieved information (on selected topics (2500 words, 60%)
- Oral presentation based on group work (40%)

# SHORT COURSES IN INTERNATIONAL HEALTH / tropEd

The short courses programme offered by the Heidelberg Institute of Global Health at Heidelberg University provides opportunities for continuing education and professional development. Short courses are open to the Institute's postgraduate students, students from other tropEd member institutions and health professionals wanting to specialise or expand their knowledge in a particular subject area in international health.

The Heidelberg Institute of Global Health offers one- and twoweek intensive courses, requiring full-time attendance from Mondays to Fridays, 9am - 5pm. Short courses offered at the Heidelberg Institute of Global Health are tropEd accredited.

**tropEd** is an international network of institutions for higher education in international health. It collaborates closely with institutions in Africa, Asia and Latin America. tropEd provides postgraduate opportunities for education and training contributing to sustainable development.

■ [www.troped.org](http://www.troped.org)

## Contact

Heidelberg University  
Heidelberg Institute of Global Health  
Im Neuenheimer Feld 365  
69120 Heidelberg  
[short.courses@urz.uni-heidelberg.de](mailto:short.courses@urz.uni-heidelberg.de)  
■ [www.ukl-hd.de/ph/shortcourses](http://www.ukl-hd.de/ph/shortcourses)